



## Worried about Flexible Working?

**People working from home, on the move or at odd hours can be a challenge...**

### **... one you can turn into an *opportunity***

- ★ to make more of your staff's time and talent;
- ★ to cut down on office overheads;
- ★ to reduce staff turnover;
- ★ to recruit more widely.

### **With the SO approach you can:**

- ★ **expand your options**  
by getting an enriched and independent view of your situation
- ★ **secure your future against damaging outcomes**  
e.g. by checking how your people will support your aims
- ★ **create a way of working that your people will appreciate and value**  
drawing on our special **\*\*People+Systems\*\*** expertise

### **...and so boost your business continuity and productivity**

more...



**So... we're here to help you do it**

Strategic consulting on human & organisational factors: key to successful change and best use of technology

London – Milton Keynes – Oxfordshire – Buckinghamshire – Hertfordshire – Bedfordshire – Thames Valley

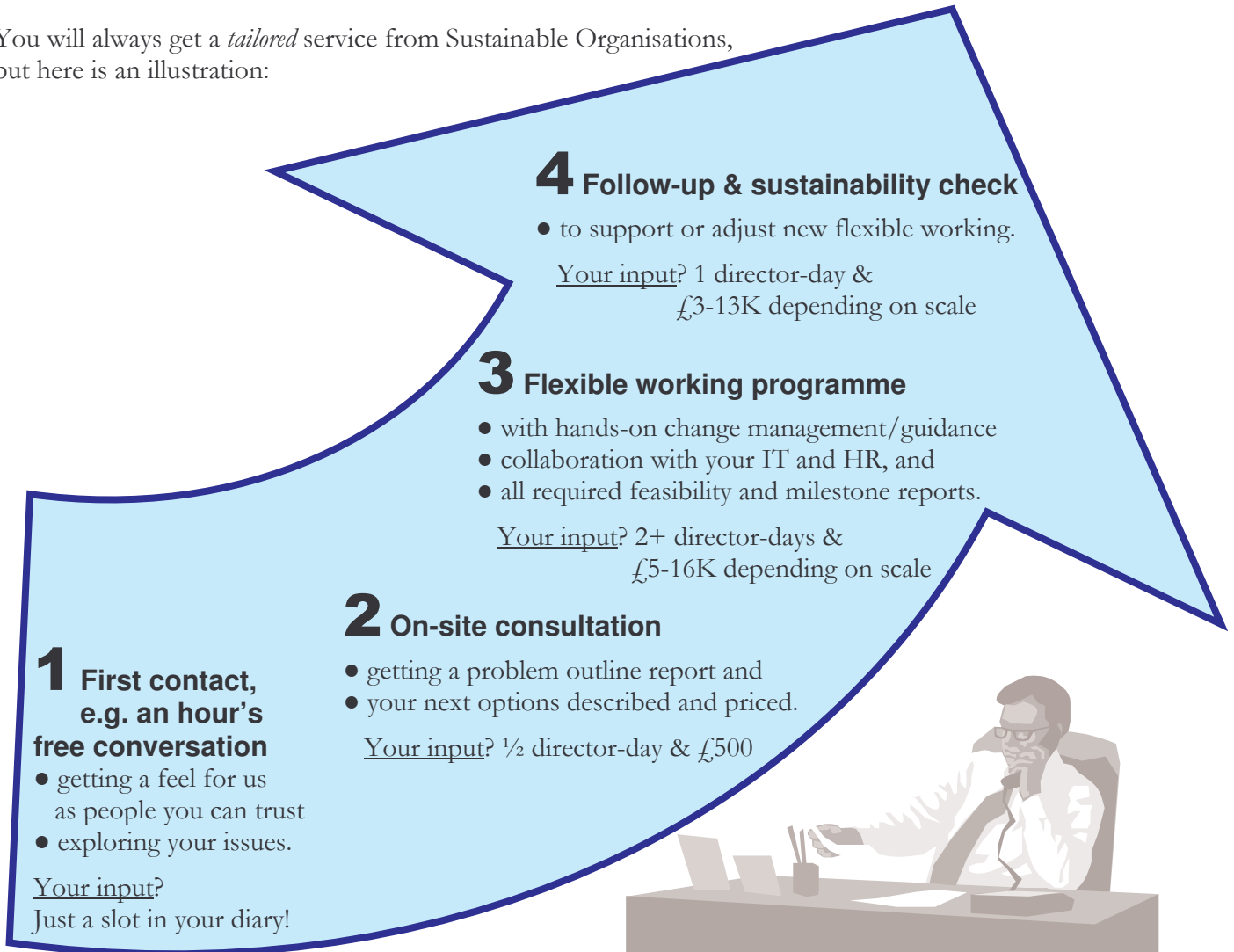
Feel free to call me, Roger Martin, on

(tel) 01296 423845 or (VoIP) 01296 679 194 or (email) [roger.martin@sustainableorganisations.co.uk](mailto:roger.martin@sustainableorganisations.co.uk)

© Sustainable Organisations Limited 2007

## Four steps to sustainable value

You will always get a *tailored* service from Sustainable Organisations, but here is an illustration:



## Why not call us in?

**Track record.** The MD's personal track record includes leading this kind of project within BT plc.

**Enthusiasm.** You get someone who loves your kind of challenge, and enjoys helping others join in.

**Integrity.** You can rely on professional service that will always be ethical and trustworthy.

**Proximity.** We are probably only an hour or two away from you.

**Rarity.** You get a unique combination of management, ICT and job design skill – ideal for such projects.